

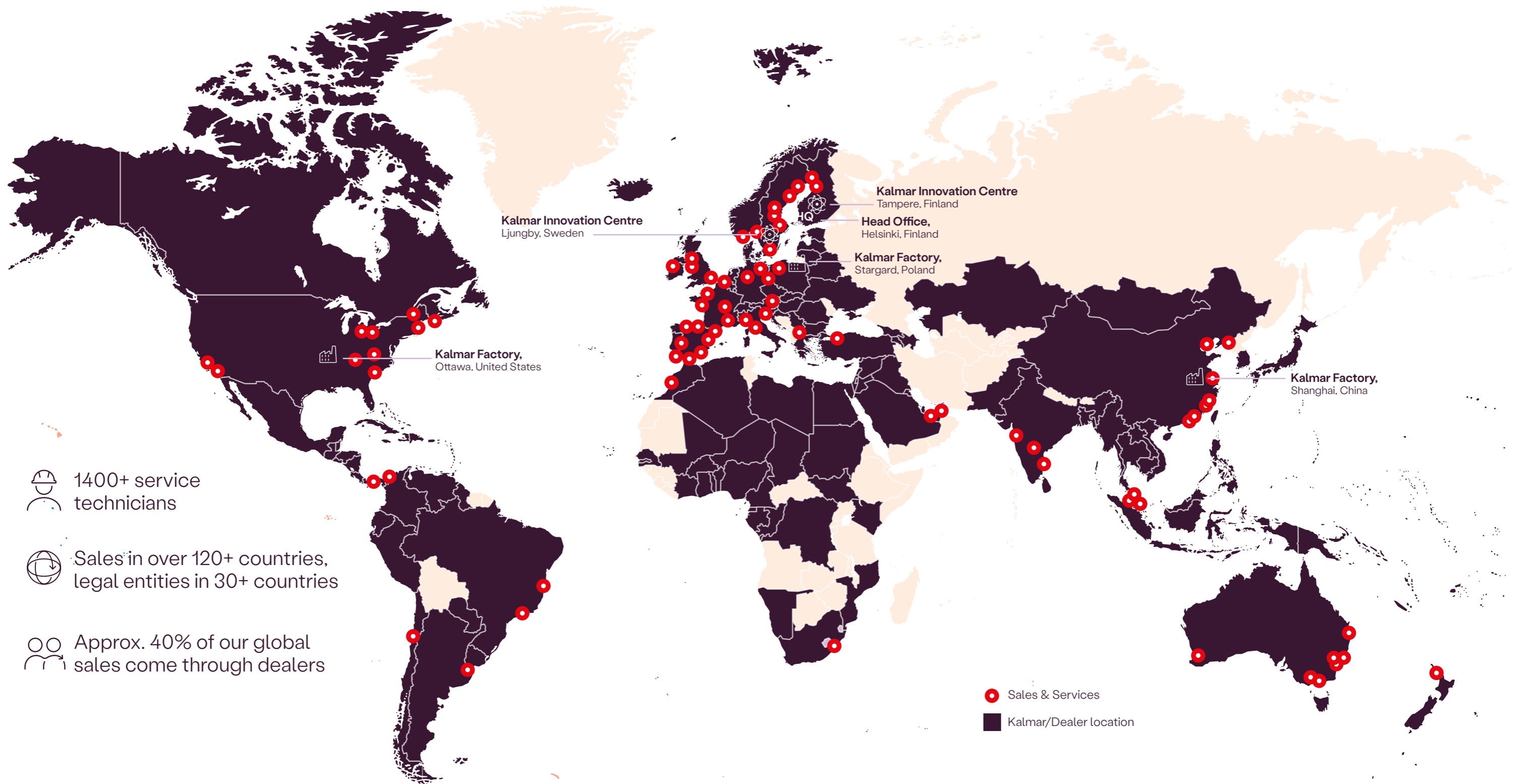


# Kalmar Services




# Global reach, local presence



With over 5,200 people, in over 120 countries we are there to support you wherever you are in the world. Based in Helsinki Finland, we have innovation centres of excellence in Ljungby Sweden and Tampere Finland, and manufacturing hubs in Poland, the USA and China. All supported by our 1,400+ team of experienced service technicians and our ever expanding list of Dealers around the world. Wherever you are, we will always be close by.



 1400+ service technicians

 Sales in over 120+ countries, legal entities in 30+ countries

 Approx. 40% of our global sales come through dealers

 Sales & Services  
 Kalmar/Dealer location

# Service tailored to your business

No two businesses are the same, no two operations are the same. That's why we've developed Kalmar Care to meet your every service need.

With Kalmar Care you get a flexible service that's built around your business. Including the experience and knowledge of Kalmar's dedicated staff, coupled with transparency and increased predictability of costs.

## Our promise to you

We will put our whole global service network, vast knowledge and experience of the industry at your service, to make sure your business keeps moving as planned.

## Making sure you get the expertise you need

We take personal responsibility for getting the job done and making sure your business is running as efficiently as possible. We do this with commitment, passion and all the expertise we have built up over the years. After all, we're trusted to service more than 1,000 customers worldwide.



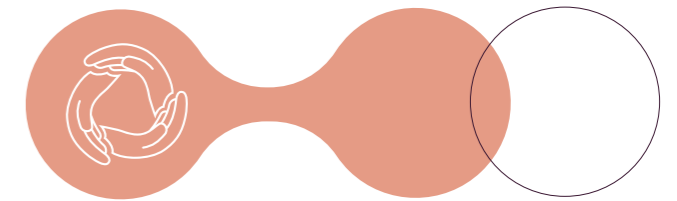
I spend a lot of time with customers to ensure my team and I understand their needs.




# Uptime and lifetime assurance

## Kalmar Care ensures uptime and the lifetime of your equipment investment.


With Kalmar Care you can focus on your operations while we make sure that the service competencies and materials you need are always available.




## Increased availability

 Your operations should not suffer from equipment unavailability. Kalmar Care always strives to provide maximum availability of your equipment by having a proactive and skilled team of service personnel, that know your machine inside out, use only genuine parts and are focused on keeping your machine moving wherever your operations are.


## Genuine spare parts and availability

 Kalmar Care uses only quality genuine parts when servicing and repairing your equipment. Securing higher levels of safety, uptime and performance of your equipment.


## Cost predictability

 Be on top of the numbers, avoid surprises and get complete predictability of your maintenance costs with **Kalmar Complete Care** full-service solution including all required labour, parts and lubricants needed due to normal wear and tear.

## Peace of mind


 With a Kalmar Care Service contract you can have complete peace of mind, knowing that your equipment is well taken care of by our professionals - enabling you to concentrate on your core business.

## Reduce risks

 The safety of your operations depends on the safety of your equipment - and there is nothing more important for us at Kalmar. A regularly maintained machine using genuine parts is a safer machine.

With Kalmar Care you can be assured that your equipment is properly maintained to ensure safe operations.

## Handle peaks

 Your business can fluctuate and handling peaks can be challenging. With Kalmar Care you can get the resources needed - when you need them. Our **On-Demand Care** is always there to help deal with times of extra demand or additional expertise.

# Service contracts

Kalmar Care is available in three different service models: our two customisable contracts – Essential Care and Complete Care – and our flexible solution On Demand Care.

## Essential Care

A preventive maintenance solution to keep your equipment in an optimal condition.



Essential Care includes period maintenance and equipment inspections to keep your equipment up and running safely. We work with you to create a solid preventative maintenance plan and proactively perform maintenance tasks accordingly.

- Ensures safety and functionality of the machine with preventive maintenance actions and inspections
- Follow-up and planning of needed preventive maintenance actions by Kalmar
- Includes parts and labour for preventive maintenance actions according to the equipment service plan.

## Complete Care

A complete service solution providing piece of mind and maximum equipment uptime.



With Complete Care, our experts take care of all the required servicing for your equipment so you can focus on your operations. Complete Care provides you with preventive and corrective maintenance services to keep your equipment in top condition and maximise the value of your assets.

- Keeps equipment in top condition, maximising value of the asset
- Full-service solution including all needed services, parts, lubricants and labour for maintenance due to normal wear and tear
- Predictable maintenance costs for the contract period.

## Flexible option

### On Demand Care

Our top-of-the-line flexible service solution for whenever you need it.



If you want a fully flexible solution that allows you to scale up or down service whenever you like, we have your back with On Demand Care. Whether you need urgent repairs, additional maintenance expertise, or swift troubleshooting to get to the bottom of a problem, we're here for you. Simply get in touch when you want an extra hand and pay for the work done. It's the luxury of complete flexibility without having to compromise on quality or expertise.

- Flexible access to Kalmar Care expertise
- Complement your existing service solution
- Swift troubleshooting
- Scale up and down when you need it
- No binding commitment.



#### Service models:



#### Essential Care

A maintenance solution to keep your equipment in an optimal condition.



#### Complete Care

A complete service solution providing piece of mind and maximum equipment uptime.



#### On Demand Care

Top-of-the-line service whenever you need it.

Maintenance Planning	●	●
Preventive Maintenance	●	●
Predictive Maintenance		●
Corrective Maintenance		●
Preventive Spare Parts	●	●
Corrective Spare Parts		●
Lubricants	●	●
MyKalmar	●	●
MyKalmar INSIGHT	●	●
Tyre Maintenance		●
Battery Maintenance		●

● Included ● Optional

Top-of-the-line service  
whenever you need it

# Keep your business moving with Kalmar Genuine Parts

Kalmar offers an extensive range of genuine parts that can either be ordered and purchased through the MyKalmar STORE or your local dealer.



## Why Kalmar Genuine Parts?

At Kalmar, we know our equipment better than anyone else. Our product specialists, with their unmatched expertise, years of experience, extensive research, and comprehensive data, can be your best advisors. We don't just recommend which parts need replacement—we also help you anticipate which parts will need to be replaced and when. With this knowledge, we ensure that you get the maximum performance and reliability from your equipment.

Kalmar Genuine Parts:



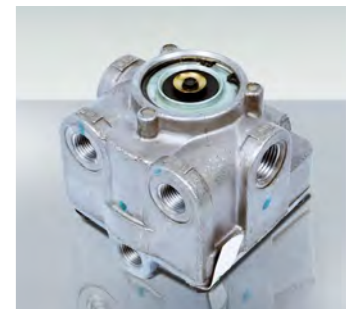
Will save you time and money as you know they have been designed specifically to work and fit your machine



Are parts that you can rely on as they have been made to our exacting high standards



Are available for you to order 24/7 through the MyKalmar Store.



# MyKalmar

## All about your Kalmar equipment

The MyKalmar portal brings together many of Kalmar's digital services into one place. With a single point of access and a user-friendly design you'll benefit from greater visibility and control over your machine data, manuals, contracts & warranty information, maintenance activities, parts ordering and equipment performance.

# MyKalmar STORE

Want to shop smarter?  
It's not just a spare parts store.

With MyKalmar, you can simply access our STORE - it's an easy to use intelligent solution that provides you with all the parts you need for your equipment.

MyKalmar STORE is your one stop shop for all the parts you need which is accessible through MyKalmar. Open 24/7, accessible on any screen and available in different languages.

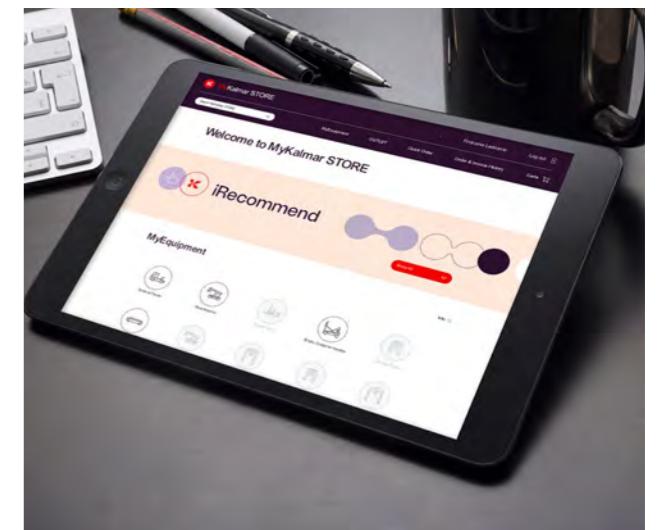
MyKalmar STORE stocks 100s of thousands of Kalmar Genuine Parts at any given time and we can have them delivered quickly to you, no matter where you are in the world. You can search, order and then track your order all through the same application. MyKalmar STORE has been designed to make your life easier.

MyKalmar STORE is Kalmar's very easy to use webshop that gives you access to all your machine's parts in one place, accessed either through part numbers or through equipment catalogues.







In our STORE you can streamline your parts ordering processes and give you time to concentrate on more important things.

To take advantage of everything that MyKalmar has to offer, get started today and join the growing community of 1000s of users from over 100 countries.

**MyKalmar STORE. It's the easy way to keep your equipment moving.**



### In MyKalmar STORE you can:

-  **Search for your part by number** if you have it on-hand
-  **Check parts availability** in different warehouses
-  **Send quotations, save parts lists,** or just order your required parts
-  **Track your order,** access all orders history, share saved carts with your team members
-  **Automatically receive proactive parts recommendations** for your equipment before you need to replace them, thanks to iRecommend feature
-  **Import your parts orders from external files,** so you can avoid double data entry and order multiple items at once.

# Introducing iRecommend

To help reduce your equipment downtime and keep your equipment running optimally we have developed iRecommend.





iRecommend is a service within MyKalmar STORE that automatically provides you with a recommended list of parts to purchase for each of your machines. Based on our extensive knowledge and deep understanding of your equipment, coupled with the latest technology and data we are able to recommend what parts you should have on hand to perform regular maintenance tasks in advance.

By having the required parts on-hand you will be able to plan preventative maintenance activities in advance to minimise any potential downtime of your equipment. Saving you time and money.

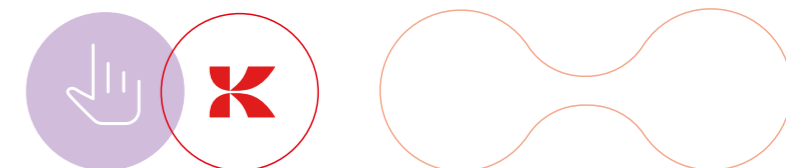
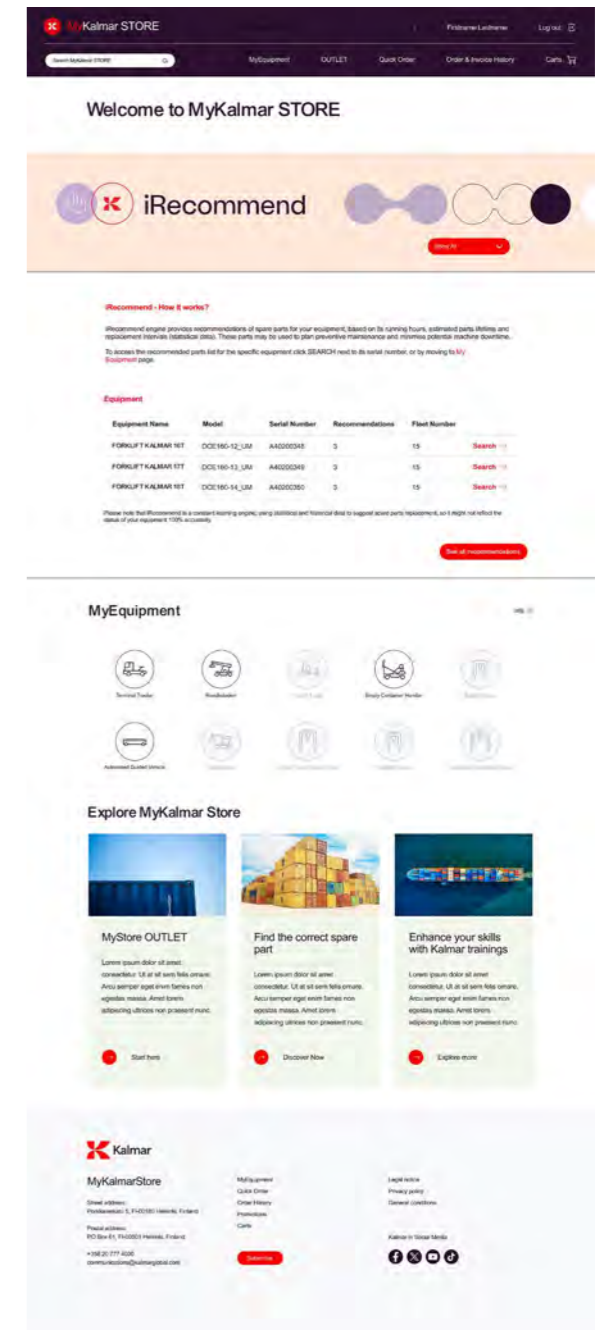
## Easy to use

When you visit MyKamar STORE, iRecommend is a section on the home page where you can review and order the parts we recommend you will need. If you leave the home page IRecommend can still be accessed in the right hand column on your MyEquipment page.

With iRecommend you'll benefit from:

-  Recommendations on which parts to order
-  Recommendations for each individual machine
-  Be able to plan preventative maintenance
-  Minimise downtime by having the required parts on hand.

Visit MyKalmar STORE and see for yourself:  
[service.mykalmar.com](https://service.mykalmar.com)





# MyKalmar INSIGHT



## Optimise your operations with Insight.

MyKalmar INSIGHT\* is a performance management tool for cargo handling, which gives you an easy to use overview of your fleet operations, by aggregating data from multiple sources, including equipment built by other manufacturers. Review your entire fleet activities, schedule maintenance activities and order the required parts automatically. All enabling

you to take action on real-time information, that will help improve your overall operations immediately. MyKalmar INSIGHT comes fitted and ready to be activated in all new Kalmar equipment, it can also be retrofitted into existing Kalmar equipment or those built by other manufacturers.

**MyKalmar INSIGHT is the digital platform that gives you the ability to manage, analyse and take actions based on current and historical equipment data. It enables you to continually optimise the performance of your entire fleet, including equipment from other manufacturers.**

With MyKalmar INSIGHT you can monitor operational and equipment data in real time which is seamlessly gathered from your connected equipment. You can track every move your equipment makes and analyse its operational data, fuel and energy consumption, routing including idle time and review shocks or alerts as they happen.

MyKalmar INSIGHT will make a real difference to your operations as it is:



### Accessible from anywhere.

MyKalmar INSIGHT can be accessed through mobile, tablet or desktop so you can monitor your equipment's performance at any time and from anywhere in the world.



### Provides actionable data.

MyKalmar INSIGHT allows you to analyse the data at both equipment or fleet level so you can take instant actions to improve operational and equipment productivity.

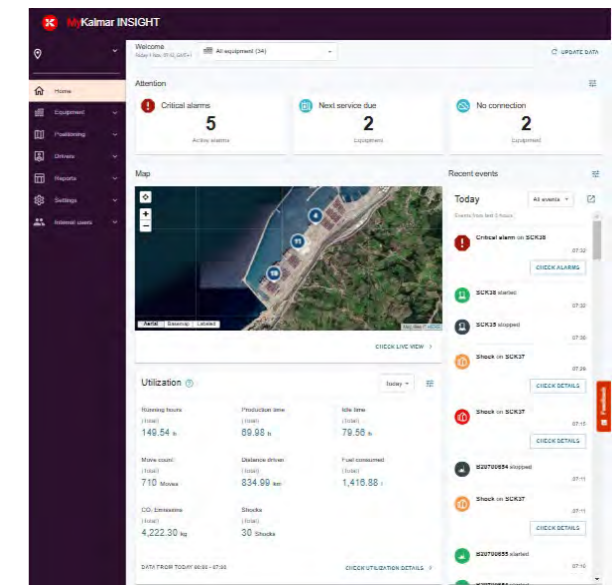


### Available for all equipment

All new Kalmar equipment can be connected to MyKalmar INSIGHT, while older models or equipment from other manufacturers may need to have connectivity hardware fitted to facilitate the seamless flow of data between your equipment and MyKalmar INSIGHT.



Once installed, you'll wonder how you ever did without MyKalmar INSIGHT.



**MyKalmar INSIGHT is easy and logical to use. The interface is user-friendly and not complicated.**

Jurgen De Bruck  
Manager Rolling Equipment and Welding, DP World . Antwerp Gateway

# MyKalmar INSIGHT

## Optional modules can provide additional value

In addition to a basic subscription, you can choose additional modules which have a wide list of value added features.



### eModule for electric machines.

Dedicated complimentary section for electric equipment and chargers, including:

- Electric equipment and battery performance KPIs
- Charging station status, sessions and usage stats
- Individual machines, chargers and overall energy consumption stats.



### Straddle Carriers live diagnostic data.

With this additional module you can gain detailed live diagnostic information from your Straddle Carriers. Information is streamed and gathered from your Straddle Carrier's:

- Engine
- AC electronics
- Brakes and hydraulics
- Control system
- Hoist, spreader and gantry.



### Enhance operation safety with immobilisation support.

Our Driver Access Solution when combined with the Driver Checklist Module will automatically immobilise your equipment when it fails a critical check until suitable action can be taken, reducing the risk of an accident and improving your overall site safety.



### Driver Access Solution.

Ensures that you have only approved operators driving a specific machine, improving the overall safety for your personnel and operations. Additionally, driver and equipment performance data is available through MyKalmar INSIGHT.



### The Checklist Module.

The Checklist Module is accessed through a mobile app where your drivers can perform daily safety and maintenance checks to their equipment. This information can be supplemented by images or video and can then be accessed through MyKalmar INSIGHT for analysis and to help plan the required maintenance before it becomes an issue. Information in each checklist can be aggregated and/or sorted by time, equipment, driver, group or status.



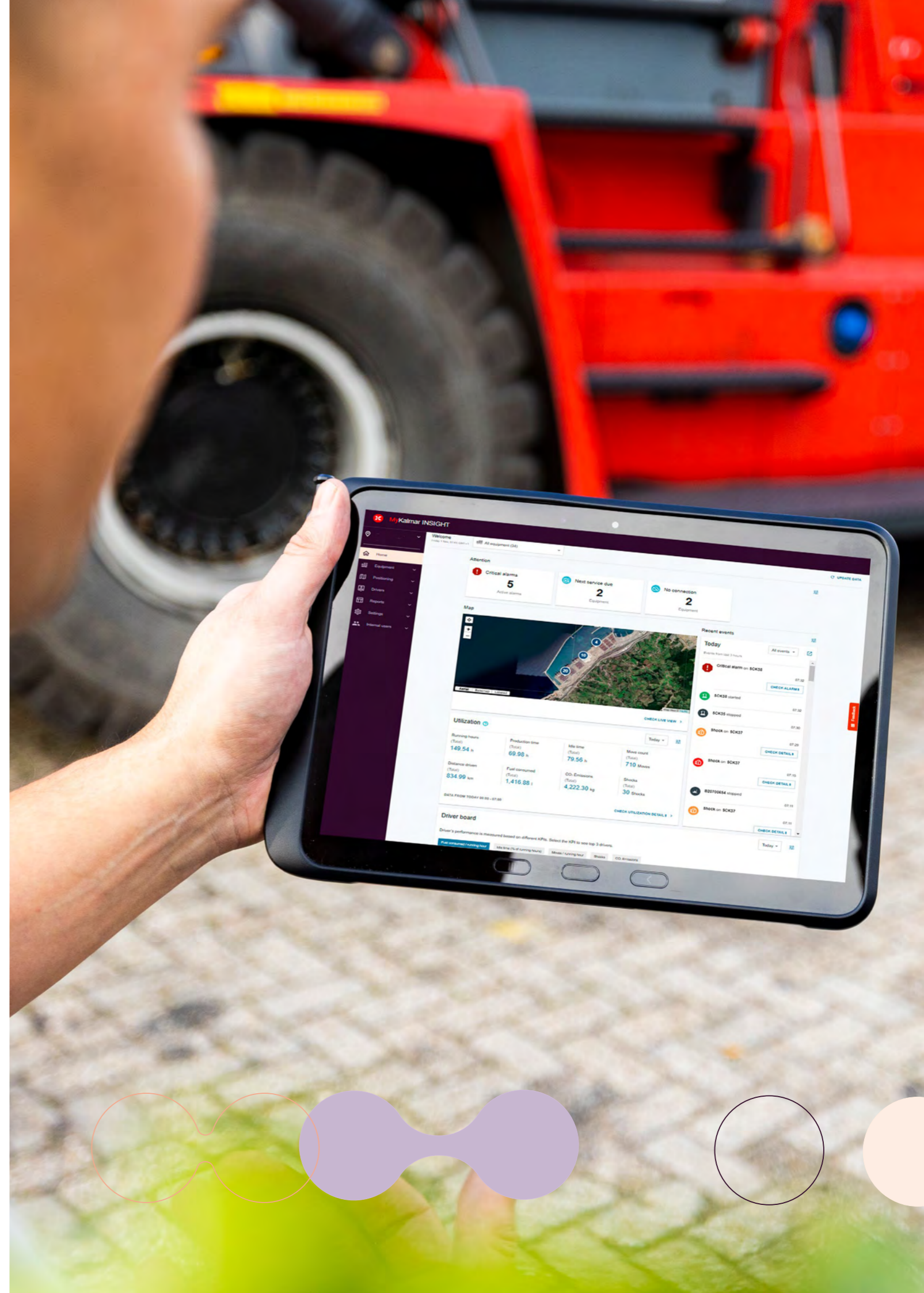
### API connectivity.

Enables the sharing and integration of your equipment data with other IT systems, allowing you to optimise your internal business processes. To streamline your data flow further, container related data can be automatically shared between your equipment and TOS.

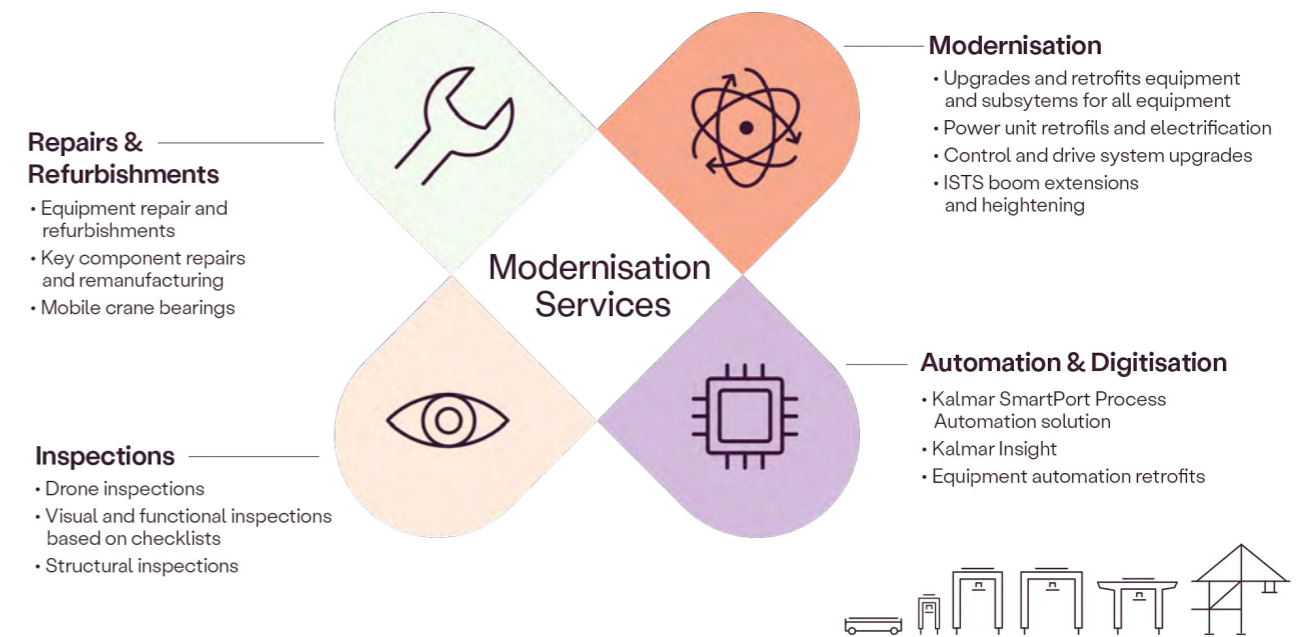
## Support

Support is available when needed for both software and or hardware issues.

**To find out how MyKalmar INSIGHT can help you keep your entire fleet running optimally, speak to your local Kalmar Sales Support team member.**



# Modernisation Services



**Kalmar Modernisation Services is a comprehensive offering that covers our entire range of cranes, shuttle carriers and straddle carriers.**

Encompassing inspections, repairs and refurbishments, modernisation, automation and digitalisation, the offering provides tailored solutions designed to optimise the performance of your equipment fleet over its lifecycle.

For each task, from smaller repairs or fine tuning to comprehensive upgrades and modernisation projects, we will provide a tailored solution that meets each client's unique needs.

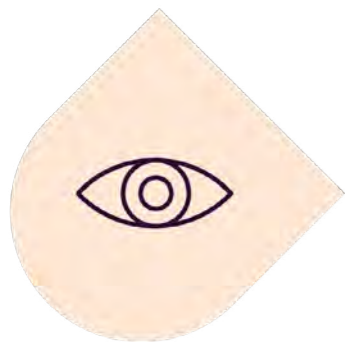
Kalmar Modernisation Services comprises four categories that cover the entire customer journey: inspections, repairs and refurbishments, modernisation, and automation and digitisation.

Starting with an inspection, we would gain a common understanding with you about where things stand and what needs to be done, and make recommendations based on real equipment operational data. After that, to keep things running smoothly in the short term we would carry out any needed repairs and overhauls on the equipment.

For all modernisation projects we start with an equipment-specific plan to identify how to improve equipment performance using the latest digital and automation technologies. This can then be applied to individual equipment or rolled out across your entire fleet.

All your modernisation needs from a single partner. By partnering with Kalmar, customers can expect lower total cost of ownership and equipment that not only lasts longer but experiences less downtime.

Predictable availability and reliable operations are critical for our customers, and our modernisation services will help you achieve this while also bringing your equipment in line with the latest codes and standards. With decades of experience of successfully delivering large and complex projects on Kalmar and third-party equipment, and our global network of service experts and engineers will work closely with your teams to deliver your projects as efficiently as possible.



## Know where you stand with thorough equipment inspections

Kalmar's inspection capabilities span a range of visual, structural and functional inspections to determine the condition of a piece of equipment. Understanding the condition of your equipment will help inform your maintenance strategy and schedule.

Inspections are based on equipment-specific checklists, and the outcome is a clear, comprehensive picture of the real condition of the equipment and the proposed next steps.

These inspections are a very valuable tool for assessing and documenting damage due to an incident or accident, for example for insurance purposes, and for providing a good understanding of the equipment's current state in order to develop a tailored service contract package that will keep your equipment operating optimally in the future.

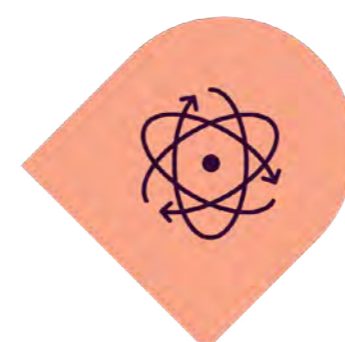


## Extend the life of your fleet with repairs and refurbishments

Repair and refurbishment services are available to extend the life of both Kalmar and third-party equipment. These services can cover items such as engines, drives, gearboxes and bearings to batteries and more.

The Kalmar team can also step in to support you with more complex projects that might be beyond the capabilities of your own maintenance teams, for example when dealing with damage caused by an incident such as a collision. In the case of damage to a yard crane, we could perform all the necessary structural analyses, trolley and/or gantry alignment and commissioning tests to get the crane back up and running in perfect working order as quickly as possible.

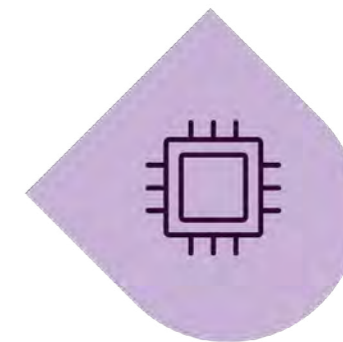
Other services on offer include cabin replacement, engine replacement, rail grinding and power-unit overhauls. For third-party equipment we also have extensive experience with STS trolley rail repair and replacement, mobile crane bearing replacement and crane decommissioning.



## Upgrade your fleet with modernisations

Even the best equipment needs a helping hand after years of loyal service. Technology advances quickly today, meaning what was state-of-the-art a few years ago could become obsolete in the future. Safety and sustainability requirements become stricter over time, and your terminal's operational needs may be far removed from what they were when your equipment arrived on site.

Kalmar's modernisation offering covers power unit retrofits and electrification, control and drive system upgrades, and large-scale crane upgrades for Kalmar and non-Kalmar equipment. These upgrades and retrofits for equipment and subsystems can help you meet changing operational needs and regulations. As a general rule, we can retrofit existing Kalmar equipment with almost any option that is available for our new equipment offering. Using our knowledge and expertise we can provide you with a clear picture of the measurable benefit of each and every upgrade.



## Future-proof your operations with automation and digitalisation

Kalmar's automation and digitisation offering provides opportunities for brownfield terminals to start their automation journey with a phased, stepwise approach and to optimise their terminal processes. Digitisation can give you access to equipment data to monitor and optimise your fleet and prepare for an automated future, for example by retrofitting MyKalmar INSIGHT – a performance management tool that turns equipment data into actionable, impactful insights.

Or with Kalmar SmartPort we offer solutions to enable features such as automated container inventory management, and can deliver brownfield automation retrofits for phased automated operations. The key to all these services is using data to build a full picture of where the terminal and equipment fleet is now, where you want it to be, and what solutions and services we can provide to help you achieve your operational targets.

# Kalmar upgrades

**Kalmar Equipment Upgrades have been designed to help make your equipment more productive, safer to operate, more fuel efficient and meet regulatory requirements. All helping to keep your business one step ahead, by getting more out of your current equipment and extending their operational lifetime.**

Kalmar Equipment Upgrades will help:

## Improve your productivity

By upgrading your equipment, you can extend the lifetime and usage of your current fleet while, saving you money in the long run and improving your productivity.

## Improve safety

We offer a range of equipment upgrades and training courses that can reduce accidents and improve the operational safety of your equipment for both drivers and non-operational staff and pedestrians.

## Improve fuel efficiency

Improve the sustainability of your operations without compromising on performance with a choice of upgrades that can help reduce your emissions and lower fuel consumption.

## Meet regulatory requirements

Keep up-to-date with the latest legislation with upgrades that help you comply with local and global regulatory requirements, extending the lifetime of your current fleet and delaying the need to invest in new machines.



# Equipment upgrades overview

## SERVICES SALES ITEM

	GENERAL	RST (Reachstackers)				ECH (Empty Container Handlers)				FLT (Forklifts)					TT (Terminal Tractors)				SC (Straddle Carriers)					CRANES				OTHER BRANDS			
		DRG	DRU	DRF	DRT	DCG	DCU	DCF	DCT	DCG	DCF	DCE	EGG	ECF	612/618	626/632	Ottawa T2	Kalmar T2	ESC	ESH	CSC	HSC	SHH	SHC	ASC	RMG	RTG E-One	All	3 <sup>rd</sup> party RTG	Terberg VT222	All
1	Air Conditioning Kits	Productivity	S																S	S	S	S	S	S							
2	Active Stability Control System*	Safety																			✓										
3	Air Dryer	Productivity														✓															
4	Automatic System Shut Down**	Eco-efficiency	✓	✓	✓	✓		✓	✓	✓	✓								✓	✓	✓	✓	✓								
5	Blue Safety Light*	Safety																													
6	Central Lubrication*	Productivity	✓	✓	✓	✓																									
7	Container Counter**	Productivity	✓	✓	✓	✓																									
8	Driver Identification with PIN Code**	Safety	✓	✓	✓			✓	✓	✓																					
9	Dual Fuel Tank	Productivity																													
10	Eco Drive Mode**	Eco-efficiency																			✓										
11	Hoist Accumulators	Productivity						✓		✓																					
12	Hook System*	Productivity	✓	✓	✓	✓																									
13	Hydraulic Sliding Cabin	Productivity	✓	✓	✓	✓																									
14	Pause Heater*	Productivity	✓		✓			✓		✓																					
15	Proactive Stability System**	Safety																		✓											
16	Rectifier Upgrade Package*	Productivity																		✓	✓										
17	Reverse Alarm*	Safety	S	S				✓	✓	✓	✓																				
18	Reverse Camera with Monitor in Cabin	Safety	✓	✓				✓	✓												✓										
19	Seatbelt Interlock**	Safety	✓	✓																											
20	Soft-landing System*	Safety	✓		✓	✓																									
21	Speed Limitation Outside Transport Mode**	Safety	✓	✓																											
22	Speed Limiter**	Safety	✓	✓	✓	✓		✓	✓												✓		✓	✓	✓						
23	Weight Scale**	Productivity	S	S																											

\* Includes parts and software  
 \*\* Includes software only

- ✓ Product available: exact equipment availability shown in SSI master document
- Product possibly available: contact Services technical support for more information.
- S Standard option in the equipment (note, not all standard options are marked)

For more information about Kalmar Equipment Upgrades please contact your local Kalmar representative or see [kalmarglobal.com/contacts](http://kalmarglobal.com/contacts)

		FEATURES
1	<b>Air Conditioning Kits</b>	<ul style="list-style-type: none"> <li>• Retro fit air conditioner kit designed especially for Kalmar equipment</li> <li>• Can be installed by your local Kalmar Service team or by your local dealer.</li> </ul>
2	<b>Active Stability Control</b>	<ul style="list-style-type: none"> <li>• A complete package that can be integrated into your straddle carriers PLC</li> <li>• Warns operators that safety stability margins have been exceeded through standard alarms and warnings</li> <li>• If stability limits are exceeded hoisting speed is restricted to 8 m/min and shifting to higher gears is prevented</li> <li>• Once machine is back within normal stability parameters all restrictions are lifted.</li> </ul>
3	<b>Air Dryer</b>	<ul style="list-style-type: none"> <li>• Removes any water that may build up in the air brake system</li> <li>• Expels oil and any solids from the system by using a special drying agent</li> <li>• Keeps brake operating optimally</li> <li>• Can be installed by the Kalmar Ottawa Service team or your local dealer.</li> </ul>
4	<b>Automatic System Shut Down</b>	<ul style="list-style-type: none"> <li>• Automatically shuts down your engine if it has been left idling for too long.</li> </ul>
5	<b>Blue Safety Light</b>	<ul style="list-style-type: none"> <li>• Projects a bright blue light onto the ground behind a reversing forklift</li> <li>• Upgrade kit provides required hardware and operational software.</li> </ul>
6	<b>Central Lubrication</b>	<ul style="list-style-type: none"> <li>• Systems automatically provides grease to required greasing points during operation</li> <li>• Complete kit can be provided ready for retro-fitting</li> <li>• Easy to access grease reservoir mounted externally.</li> </ul>
7	<b>Container Counter</b>	<ul style="list-style-type: none"> <li>• Automatically counts all container lifts performed by the machine</li> <li>• Displays container count on the cabin monitor.</li> </ul>
8	<b>Driver Identification with PIN Code</b>	<ul style="list-style-type: none"> <li>• Easy to install software upgrade</li> <li>• Machine will not operate until four-digit pin code is entered into cabin touch screen</li> <li>• Individual four-digit pin code can be issued to each operator.</li> </ul>
9	<b>Dual Fuel Tank</b>	<ul style="list-style-type: none"> <li>• Double current fuel capacity</li> <li>• Automatically feeds main tank.</li> </ul>
10	<b>Eco Drive Mode</b>	<ul style="list-style-type: none"> <li>• Software package that can be installed and tested by Kalmar Service team</li> <li>• Provides three different levels of operational modes: Power, Normal and Economy.</li> </ul>
11	<b>Hoist Accumulators</b>	<ul style="list-style-type: none"> <li>• Can reduce the impact of operating on uneven surfaces by dampening hydraulic systems and mechanical parts</li> <li>• Helps to reduce hydraulic pressure peaks.</li> </ul>

BENEFITS	CUSTOMER NEED
<ul style="list-style-type: none"> <li>• Everything you need in one model specific kit</li> <li>• Creates a more comfortable and safer operating environment for your drivers.</li> </ul>	<b>Productivity</b>
<ul style="list-style-type: none"> <li>• Makes equipment much safer to operate</li> <li>• Helps maintain correct stability levels without compromising performance especially when turning</li> <li>• Keeps the driver operating within safe bounds reducing the risk of accidents and stress.</li> </ul>	<b>Safety</b>
<ul style="list-style-type: none"> <li>• Improves safety by helping to keep the air brake system working optimally</li> <li>• Installation quality is guaranteed by Kalmar Ottawa.</li> </ul>	<b>Productivity</b>
<ul style="list-style-type: none"> <li>• Can reduce fuel consumption and emissions by reducing idle time</li> <li>• Helps extend the life of your engine, brakes and gearbox.</li> </ul>	<b>Eco-efficiency</b>
<ul style="list-style-type: none"> <li>• Helps bystanders know that a forklift is reversing</li> <li>• Improves operational safety especially when operating your forklift within confined spaces indoors.</li> </ul>	<b>Safety</b>
<ul style="list-style-type: none"> <li>• Guarantees that all greasing points are well lubricated automatically during operations</li> <li>• Reduces manual maintenance time and costs as helps to reduce wear and tear</li> <li>• Can help improve the lifetime value of your machine.</li> </ul>	<b>Productivity</b>
<ul style="list-style-type: none"> <li>• Removes the need to manually record container lifts</li> <li>• Can differentiate between top, over-height and bottom lifts</li> <li>• Saves time and helps improve operational productivity.</li> </ul>	<b>Productivity</b>
<ul style="list-style-type: none"> <li>• Stops the unauthorised operation of protected equipment</li> <li>• Can be set to activate engine or limit operational speed to 5km/h, making it possible to move the machine in case of an emergency.</li> </ul>	<b>Safety</b>
<ul style="list-style-type: none"> <li>• Reduces time spent refuelling by 50%</li> <li>• Minimises risk of contamination that can cause accidents</li> <li>• Fitted with steps and platform for easy access to the cabin.</li> </ul>	<b>Productivity</b>
<ul style="list-style-type: none"> <li>• Can cut fuel consumption by up to 25%</li> <li>• Eco Driver mode can be set at the appropriate level to meet specific operation requirements</li> <li>• Easy to change between the three modes</li> <li>• Can reduce wear and tear on tyres and machine.</li> </ul>	<b>Eco-efficiency</b>
<ul style="list-style-type: none"> <li>• Makes operating equipment more comfortable for the driver</li> <li>• Improves dampening performance when lifting or lowering loads.</li> </ul>	<b>Productivity</b>

		FEATURES
12	<b>Hook System</b>	<ul style="list-style-type: none"> <li>• Can be fitted in place of spreader system once appropriate modifications have been made</li> <li>• Can be used to lift a variety of different loads.</li> </ul>
13	<b>Hydraulic Sliding Cabin</b>	<ul style="list-style-type: none"> <li>• Enables the position of the cabin to be moved easily</li> <li>• Cabin movement is controlled by an in-cabin switch.</li> </ul>
14	<b>Pause Heater</b>	<ul style="list-style-type: none"> <li>• Machine cabin can be kept warm during short breaks by using heat from the engines cooling system</li> <li>• Automatically maintains cabin temperature within 6°C of set temperature.</li> </ul>
15	<b>Proactive Stability System</b>	<ul style="list-style-type: none"> <li>• Automatically monitors the stability of the straddle carrier</li> <li>• Automatically alerts the operator when safe operational stability parameters have been exceeded</li> <li>• If stability levels become critical the speed and torque will be automatically reduced and light braking applied</li> <li>• Spreader sideshift is automatically centred if operation safety margins are exceeded and hoist speed is reduced.</li> </ul>
16	<b>Rectifier Upgrade System</b>	<ul style="list-style-type: none"> <li>• Complete upgrade pack provided to replace your current rectifier</li> <li>• New PLC programme also included</li> <li>• Higher current capacity with improved temperature margin.</li> </ul>
17	<b>Reverse Alarm</b>	<ul style="list-style-type: none"> <li>• Rear mounted alarm that emits a warning alarm when the equipment is reversing.</li> </ul>
18	<b>Reverse Camera with Monitor in Cabin</b>	<ul style="list-style-type: none"> <li>• Reversing camera mounted on back of machine</li> <li>• In cabin view provided through fitted monitor.</li> </ul>
19	<b>Seatbelt Interlock</b>	<ul style="list-style-type: none"> <li>• Seatbelt interlock system stops equipment from being operated unless the driver's seat belt is fastened.</li> </ul>
20	<b>Soft-landing System</b>	<ul style="list-style-type: none"> <li>• Package includes sensors and software upgrade</li> <li>• Automatically lowers the speed of spreader when connecting to a container.</li> </ul>
21	<b>Speed Limitation Outside Transport Mode</b>	<ul style="list-style-type: none"> <li>• Easily installed software upgrade</li> <li>• Limits operational speed when load is positioned outside a safe operating zone.</li> </ul>
22	<b>Speed Limiter</b>	<ul style="list-style-type: none"> <li>• Software package that limits the driving speed of the equipment</li> <li>• Software is installed and tested by a trained Kalmar Service engineer.</li> </ul>
23	<b>Weight Scale</b>	<ul style="list-style-type: none"> <li>• Automatically weighs your load using the hydraulics in the lift cylinder</li> <li>• Will weigh loads with an accuracy within 5%</li> <li>• Load weight is clearly displayed on the machine display.</li> </ul>

BENEFITS	CUSTOMER NEED
<ul style="list-style-type: none"> <li>• Enables existing equipment usage to be extended to different types of loads.</li> </ul>	<b>Productivity</b>
<ul style="list-style-type: none"> <li>• Improves operational visibility for the driver</li> <li>• Makes operations safer as cabin position can be adjusted quickly and easily from the cabin.</li> </ul>	<b>Productivity</b>
<ul style="list-style-type: none"> <li>• Maintains a comfortable operating environment for driver</li> <li>• Economical solution as uses heat directly from the machine's engine.</li> </ul>	<b>Productivity</b>
<ul style="list-style-type: none"> <li>• Equipment maintains high operational safety standards</li> <li>• Improved stability when operating</li> <li>• Reduced risk of incidents.</li> </ul>	<b>Safety</b>
<ul style="list-style-type: none"> <li>• Simpler system with less possible fault points</li> <li>• Robust design specially for mobile use</li> <li>• Improved lifetime over earlier rectifiers.</li> </ul>	<b>Productivity</b>
<ul style="list-style-type: none"> <li>• Improves overall safety as the alarm provides clear warning</li> <li>• Reduces the risk of damage and personal injury.</li> </ul>	<b>Safety</b>
<ul style="list-style-type: none"> <li>• Reduces the risk of any accidents when reversing</li> <li>• Helps keep driver aware of what is going on behind them by improving overall visibility</li> <li>• Acts as a second set of eyes.</li> </ul>	<b>Safety</b>
<ul style="list-style-type: none"> <li>• Stops equipment being operated if the driver's seat belt is not fastened</li> <li>• Helps to reinforce a safety culture when operating equipment.</li> </ul>	<b>Safety</b>
<ul style="list-style-type: none"> <li>• Reduces maintenance costs</li> <li>• Reduces the chance of damage to containers or the spreader</li> <li>• Makes each lift safer by reducing the risk of the spreader hitting the container at speed.</li> </ul>	<b>Safety</b>
<ul style="list-style-type: none"> <li>• Reduces risk of accidents and improves operational safety</li> <li>• Improves handling safety when load is positioned outside of the safe operational zone.</li> </ul>	<b>Safety</b>
<ul style="list-style-type: none"> <li>• Ensures that equipment is always operated at safe speeds</li> <li>• Decreases fuel consumption</li> <li>• Improves potential lifetime of the equipment by reducing wear and tear.</li> </ul>	<b>Safety</b>
<ul style="list-style-type: none"> <li>• Driver can get the load weight directly without using additional weighing scales saving time and double handling</li> <li>• Loads can be handled safely when the weight is known, especially when loading onto a Truck for transport.</li> </ul>	<b>Productivity</b>

For more information about Kalmar Equipment Upgrades please contact your local Kalmar representative or see [kalmarglobal.com/contacts](http://kalmarglobal.com/contacts)



# Kalmar Used Equipment



# Kalmar Equipment Rentals



## Legendary reliability

**Moving heavy goods comes with a heavy responsibility, which is why you need a reliable and easy solution to match your productivity needs.**

Kalmar's carefully inspected used equipment has the legendary reliability of a like-new machine - it just has more stories to tell. Rent or purchase, whichever is easier for you.



See our available stock at [used.kalmarglobal.com](https://used.kalmarglobal.com) or reach out for personal service with your local Kalmar sales representative.

## Why Kalmar Used Equipment?

We take pride in delivering a high-quality used equipment solution to you, which has been carefully inspected and fully optimised, for a low total cost of ownership. Kalmar's used equipment will also make your life easier, as you can access all the support your need from your local Kalmar Service Team.

## A full history

All our used equipment comes with full documentation and service history (if the service has been conducted by Kalmar). You'll find these details in our used equipment ads or you can get in touch with your Kalmar representative for more information.

## Everything taken care of





We deliver more than a thousand units of used equipment every year through an extensive network of transporters. We can deliver your machine wherever needed in a safe and solid condition - with Kalmar everything is taken care of.

## Short term need?

**Kalmar has a large stock of pre-owned equipment ready for short term rentals, including forklifts, reachstackers, empty container handlers and terminal tractors with a variety of lifting capacities and attachments.**

With highly flexible terms, our rental solutions provide a worry-free answer to your short term needs.

Kalmar has a range of equipment ready for you to rent, including:

-  Forklifts
-  Reachstackers
-  Empty Container Handlers
-  Terminal Tractors

## Why rent a Kalmar solution?

- Short term rentals to fill short term gaps
- Extra equipment without any capital investment
- Helps to manage fluctuating demands
- Fully serviced and maintained during rental period
- Reliable, robust, quality equipment
- Large stock of equipment available today.

See our available stock at [used.kalmarglobal.com](https://used.kalmarglobal.com) or reach out for personal service with your local Kalmar sales representative.



# Kalmar Training

## Financing options

You may choose to buy your equipment outright or consider leasing or renting your equipment. Kalmar offers a range of leasing and renting options that can give you the financial predictability you need and the option to upgrade your equipment after a fixed period. With our rental solutions you can focus on your core operations, while we perform all your service and maintenance needs required by your fleet. You just need to choose which leasing or rental package is right for your business. Kalmar can also help you with trading-in your old equipment.

No matter what your service and support needs are, make sure that you speak to your local Kalmar team first.

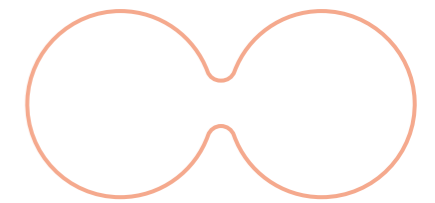
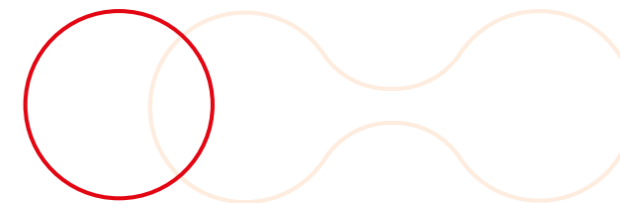
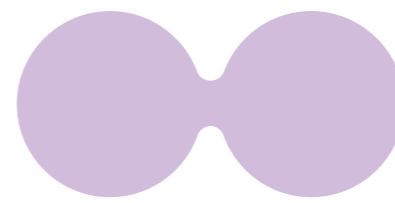
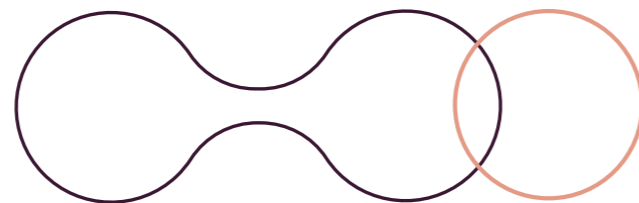
## Enhance your skills

To get the most out of your new machine our training centre offers a range of courses for both your technicians and operators. Operators can be taught how to drive the machine for optimum performance and minimum waste, and to learn what needs to be checked daily for optimal safety. Technicians can be educated with the knowledge they need to keep your new equipment in top condition in a safe way. Courses are a mix of theory and hands-on experience.

## Comprehensive training options

- Operator training
- System training
- Product training
- technical training
- Eco Driving training

Ask about more Kalmar training options:  
[www.kalmarglobal.com/parts-services/kalmar-training-centre/#contact-expert-form](http://www.kalmarglobal.com/parts-services/kalmar-training-centre/#contact-expert-form)





**Kalmar**

[www.kalmarglobal.com](http://www.kalmarglobal.com)

Published by Kalmar. Copyright © Kalmar Corporation 2024.  
All rights reserved.

2024-02-14

